

## Christ the Redeemer Lutheran Church



# INSIGHT

February 2025

A monthly publication of Christ the Redeemer Lutheran Church  
submissions by the 15th of each month to: [insight@crlcbrecksville.org](mailto:insight@crlcbrecksville.org)

### CRLC STAFF

**The Reverend Randy O'Donnell, PASTOR**

**James Alfieri, MUSIC DIRECTOR**

**Jill Koubal, PARISH NURSE, RN, BSN**

**Laurie Siebert, SECRETARY**

**Marci Kehoe, SECRETARY**

**Paul Travagianti, YOUTH DIRECTOR**

**SUNDAY WORSHIP TIME: 8:00 & 10:30AM**

**SUNDAY SCHOOL FOR ALL: 9:15AM**

### CHURCH OFFICE HOURS

***Church Office is Closed on Monday***

**9:00 AM—2:00 PM TUES/WED/THURS**

**9:30 AM—1:00 PM FRIDAY**

## FROM THE PASTOR

*"But when Simon Peter saw it, he fell down at Jesus' knees, saying, 'Go away from me, Lord, for I am a sinful man! (Luke 5:8)"*

As I have mentioned before, from time to time I am going to use this column to share some things that "I think I think." Peter King, a now retired sports reporter, used to write a long weekly article called FMIA (Football Morning In America), in which he not only reflected on the latest football news, but also concluded with some of his thoughts on issues with a segment called "10 Things I think I think" – I have stolen that idea from him.

...I think I think that time is going faster and faster. I used to hear this frequently while growing up and I always had my doubts, but I think 2024 was the fastest year I have ever lived.

...I think I think I wrote this before...that our country is not paying enough attention to the cost of divisiveness. It is just too easy to blame 'the other side.' We continue to find a way as a society and country to live in a tension of disagreement without the need to destroy everything about the 'other.'

...I think I think the cost of parents not exposing their children to a faith tradition of some type, will make them easy targets later in life for "cultic type" recruitment into all kinds of beliefs.

...I think I think I sometimes just want to skip over Lent. I just want the desserts of life and not the green beans.

...I think I think this congregation in many ways continues to defy many of the trends and impacts of society that other churches are experiencing. I am not 100% sure why, but I think overall this is a blessing and I am grateful.

***See you in worship,***

***Pastor Randy***

**PGSO**

## LENT DOESN'T BEGIN UNTIL NEXT MONTH!



Due to Easter falling so late this year (April 20th). Lent does not begin until March 5th. We are planning to have for Ash Wednesday two worship opportunities – 12NOON and 7:00PM. Both communion worship services will include the option to receive the imposition of ashes. We will also have our midweek Lenten services the following Wednesday beginning at 7:00PM, with prayers around the cross. Watch for more details on Holy Week as the time draws near. The theme for our Lenten pilgrimage this year is “Everything in Between – meeting God in the midst of extremes.

### THEO-THURSDAY



Theo Thursday continues this month. This informal time is led by Pastor Randy and is open to all. This month we will again be at Royal Breakfast restaurant (Broadview Heights) on Thursday, February 20th @ 9:30AM.

### FORMAL COMMUNION INSTRUCTION

The formal instruction for communion for our 5th graders will take place on Sundays March 9th and March 16th, following the second service. While some students are already taking communion, this is our formal study of the sacrament, and it is meant for **all 5th graders**. Please RSVP to Pastor Randy about your 5th grader’s participation in this upcoming class. If due to other reasons, you have a 6th or 7th grader who has not yet gone through this class with Pastor Randy, they are invited as well.

### FANTASY FOOTBALL CHAMPION!

One more did you know...Did you know that we have a new fantasy football champion at CRLC!! The season’s winner is Lauren Jirousek. Congratulations Lauren! If you would like to play in our fantasy football league this fall talk to Pastor Randy.



### INTERESTED IN JOINING THE CHURCH?

If you are interested in joining Christ the Redeemer Lutheran Church, speak with Pastor Randy.

### CHRISTIAN YOGA AT CRLC

Renew your mind, body, and spirit on Mondays, 7:00PM led by Jenna Waltz in the Fellowship Hall. All are welcome! The cost is a free will offering. Bring your own yoga mat. For more information please contact Jenna at [jenna.waltz@gmail.com](mailto:jenna.waltz@gmail.com).



#### SPECIAL POINTS OF INTEREST:

- Pastor Randy’s Message
- Lent
- 2025 Leadership
- Kitchen at Your Service
- Ecumenical Service
- Adult Sunday School
- LMM Men’s Shelter Needs
- LMM Volunteer Opps

#### INSIDE THIS ISSUE:

Current, Upcoming, Propety.....	1-5
Music Director.....	6
Readings.....	7
Health News.....	8
Education.....	9-10
Serving.....	11-15
Fellowship.....	16-17
Volunteers.....	18
Birthday/Anniversaries.....	19
Did you know/Prayers.....	20
Calendar.....	21

## 2025 LEADERSHIP

The leadership of Vision Board had their initial 2025 meeting in January. They elected the following our officers (except the treasurer which is elected by our congregation). This is our executive committee, along with Pastor Randy, for this year:

**President:** Ryan Haely

**Vice President:** Steve Wilson

**Secretary:** Tonya Pagel

**Treasurer:** Laura Kiick



Thank you to all who are sharing their discipleship in this place!

## PROPERTY

MIKE SKWARSKI

### THE CRLC KITCHEN IS AT YOUR SERVICE!

Winter Greetings!

My name is Lauren Jirousek and I have assumed responsibility for the kitchen operations. I'd like to explain a bit about how the kitchen facilities function.

Fellowship Hall is a wonderful room to hold special events! It can seat up to 100 people with the ability to expand to the Chapel View Room next door. The events we have hosted include Lenten Soup dinners, memorial luncheons, the Reformation Dinner, baby and wedding showers, and the Advent Women's gathering, to name a few. Plus, various community groups use the room for meetings.

As much as possible, we strive to use compostable supplies including our tableware and plates. We are still investigating options for some of the plastic cups but we have come a long way!

My role is to ensure that event organizers have everything they need. The kitchen will supply simple paper goods and hot and cold beverages if requested. You are welcome to bring in your own supplies and decorations to fit the theme of your event!

A few reminders:

- We ask that you take ALL extra supplies (including paper goods) with you when you leave. The miscellaneous plates, cups, and napkins are not needed by the kitchen. This includes leftovers and condiments (do not leave them in the refrigerator).
- ALL food must be taken home by the organizers. If there is a significant amount of food left over, we can help arrange your delivery to local shelters.
- Except for memorial luncheons which I run, we also request that you clean the kitchen area before you depart. There are serving utensils available for use. If you use them, please wash and put away.
- Please leave tables and chairs in place unless otherwise discussed with myself or the office. Four tables are always set up and are not to be stowed away.
- If you use church-supplied table covers, please take them home, wash them, and return to the pantry room.
- All events must be scheduled through our wonderful office staff who will ensure there are no conflicting events.

Another job I have taken on is to coordinate memorial luncheons. It is an honor to help the families say good-bye to their loved ones but it is a lot of work. While contributions of desserts are always welcome, the primary meal is catered. Please work with myself or Pastor Randy on details for room setup and food delivery. After that, we'll take it from there!

Thank you for using the CRLC facilities for your celebration!

## ECUMENICAL SERVICE

The Ecumenical service on January 23rd was well represented by many of our church members, along with various other churches. It was a celebration of faiths, with some attendees coming from as far as Youngstown.

Please enjoy these pictures of the Bishops and other attendees.



## ECUMENICAL SERVICE—continued

Attendees and Bishops



## CONCERTS @ CRLC



I am excited to announce that *Concerts @ CRLC* will present three concerts for the Spring 2025 Season! All concerts are free and open to the public and are held in the Sanctuary of Christ the Redeemer Lutheran Church. A free will offering will be collected to support the concert series. All concerts begin at 4pm.

### ***March 23, 2025 Astralis Chamber Ensemble***

Award-winning flutist and director of the Astralis Chamber Ensemble, Angela Massey will present “Voyage” taking the audience on an exploration of music for flute and harp with works by Mozart, the Italian film composer Rota, and a French Suite by Jean Cras. Massey presents over sixty recitals each year and has been a featured soloist including appearances with the Tryon Concert Association, Kosciuszko Foundation in NYC, and abroad in France, Germany, Italy, Romania, and Switzerland.

### ***April 13, 2025 Simple Gifts***

Simple Gifts has performed at major venues including the Smithsonian, National Portrait Gallery, National Interchurch Center, Bethel Woods, and Lincoln Theatre, as well as dozens of churches and schools. Simple Gifts play a wide variety of folk and world music using about 12 different instruments, and also offer hands-on workshops for children and adults on world music and instruments. Our repertoire includes artfully arranged Christian hymns in addition to traditional music from Eastern Europe, the British Isles, Appalachia, Scandinavia, and the Jewish tradition.

### ***May 18, 2025 CSU Percussion Ensemble***

The CSU Percussion Ensemble is an elective performance ensemble in the School of Music at Cleveland State University in Cleveland, Ohio. It is dedicated to the thoughtful performance of music for the modern percussion ensemble. Repertoire includes contemporary works, classics of the genre, and transcriptions from all musical periods. The members of the ensemble include graduate and undergraduate percussion majors from all areas of emphasis. Katalin La Favre, Applied Faculty in Percussion, directs the CSU Percussion Ensemble. A classically trained percussionist on a non-traditional path, Katalin La Favre throws her creative energy into developing captivating experiences. Interested in interdisciplinary and experimental work, she was awarded a Fulbright Grant to study with French percussionist Jean Geoffroy. Katalin remained in France for 9 years, collaborating with actors, dancers, and musicians for several programs which have been performed in France, Germany, Scotland and Portugal. These programs were vastly diverse, combining contemporary music, contemporary dance, poetry, narration, humor, and street theatre.

All are welcome! Bring a friend!

## CONCERT SERIES

James Alfieri, our Music Director, will be putting together a concert series in 2025. If you would like to become a sponsor, please fill out a form that can be found on the message board in the Narthex, or on our CRLC site under Worship. Complete the form and place in the offering plate at church, or mail to the church.

# READINGS FOR FEBRUARY

## FEBRUARY 2—Presentation of Our Lord

The Presentation of Our Lord is referred to in some corners of the church as Candlemas because of an ancient tradition of blessing all the candles to be used in the church in the coming year at the mass celebrated on that day. It was a way of underscoring the truth of Simeon's confession that this baby Jesus was "a light for revelation to the Gentiles" and a light for glory to Israel. Let the light of every candle in church be a little epiphany of the love of God for all people in the person of God's son, Jesus, the light of the world.

Malachi 3:1-4  
Psalm 84  
Hebrews 2:14-18  
Luke 2:22-40

## FEBRUARY 9—Fifth Sunday after Epiphany

The fifth Sunday after Epiphany continues to highlight unlikely instruments and circumstances appointed to reveal God's glory. "Who will go for us?" God asks. A person of unclean lips, a former persecutor of the church of God, and three fishermen who couldn't catch a thing. More surprising still, perhaps, is that we are also called.

Isaiah 6:1-8 [9-13]  
Psalm 138  
1 Corinthians 15:1-11  
Luke 5:1-11

## FEBRUARY 16—Sixth Sunday after Epiphany

Blessings and curses abound on the sixth Sunday after Epiphany. We would do well to listen closely to whom the "blessed are" and the "woe to" are directed and to find our place in the crowd among those who desire to touch Jesus. The risen Christ stands among us in the mystery of the holy supper with an invitation to live in him, and offers power to heal us all.

Jeremiah 17:5-10  
Psalm 1  
1 Corinthians 15:12-20  
Luke 6:17-26

## FEBRUARY 23—Seventh Sunday after Epiphany

Mercy. Mercy. Mercy. Joseph lives it in Egypt. Jesus preaches it in the gospel. The Spirit guides us into merciful lives with the power of forgiveness to reconcile what is fractured and divided. Such merciful living is the baptismal blessing of having put on Christ. It is the gift of the life-giving Spirit. It is a reflection of God's glory revealed in Christ.

Genesis 45:3-11, 15  
Psalm 37:1-11, 39-40  
1 Corinthians 15:35-38, 42-50  
Luke 6:27-38

**“Above all else, guard your heart, for it is the wellspring of life” (Proverbs 4:23).**

Something’s wrong ~ pain ~ GI issues or dizziness? When should I call 911? Should I wait until tomorrow to call my doctor? Is an urgent center or ER the best place to be evaluated?

These are questions we all experience when we are sick. Not every illness or injury warrants a trip to the emergency room (ER). Urgent care centers are stand-alone clinics that are equipped to handle urgent but non-life-threatening medical problems. 911 emergency assistance can provide guidance and has special equipment to give immediate care.

Are you experiencing a serious health problem? **Serious symptoms to never ignore:**

- Chest pain or pressure in your chest
- Difficulty breathing
- Pain in the arm or jaw (this can be a sign of a heart attack)
- Poisoning or overdose of drugs or alcohol
- Seizures
- Serious injuries with heavy bleeding or large open wounds
- Severe allergic reaction with trouble breathing, swelling and hives
- Severe burns
- Severe headache, especially if it started suddenly
- Signs of a stroke, such as:
  - \* Confusion or trouble speaking
  - \* Dizziness, loss of balance or trouble walking
  - \* Numbness or weakness in the face, arm or leg
  - \* Trouble seeing out of one or both eyes
- Vomiting or diarrhea that doesn’t stop
- High Fever: adults over 101° F, children 102° F.

**Head Injury:** A bump on the head can be serious. Get immediate medical care if you *pass out*, have a [seizure](#), or have a *headache that won’t go away, persistent vomiting or nausea, slurred speech, or you feel confused, weak, numb, or less coordinated.*

#### **Special Case: Blood-Thinning Medications**

Even a minor injury can be serious if you take blood thinners. **Call 911** if you have an injury and your heart rate or breathing becomes fast or trouble breathing, a headache, or feel sleepy, faint, or dizzy. Also, bruises that get larger or more painful may be a sign of internal bleeding and mean you should get emergency care.

<https://www.webmd.com/first-aid/ss/slideshow-when-call-911>

<https://www.uhone.com/health-and-wellness/healthy-living/quiz-where-should-i-go-to-get-medical-care>

*Jill Koubal*  
Parish Nurse, RN, BSN



## ADULT SUNDAY SCHOOL

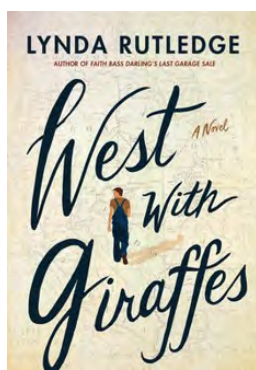
The February schedule for the Adult Sunday school class is as follows:

February 2nd and 9th we will conclude the series “Down and Out – Where Grace Takes You”.

Then beginning on Sunday February 16th Pastor Randy will be leading a series entitled: “Who was Jesus?”.

Then in mid-March we will welcome back Dr. John Byron who will be tackling in our Lenten season the scholarly aspects of the end of Jesus’ life including: “Who killed Jesus?” “The burial of Jesus” and “Resurrection: The Hope of the Christian World.”

## CRLC FAITHFUL READERS



Meeting on February 19th at 10:00am in the Chapelview Room.

The book for February is “West with Giraffes” by Lynda Rutledge.

## LADIES BIBLE STUDY



Meeting on February 5th at 10:00am and February 6th at 7:00pm.

We will be doing Session One: Ruth and Naomi. Ruth chooses to remain part of Naomi’s family, even after Naomi has lost everything – including her husband and sons. This intergenerational story of faithfulness during emptiness and sorrow helps us learn how to rely on God in bleak times.

## CHILDREN’S CHURCH TIME

Our staffed Children's Church time continues this month. An adult will meet the children after the children's sermon and return them as Communion begins.

**Volunteers are needed** so please sign up for a single Sunday, multiple Sundays, or be part of a rotating schedule. Anyone Interested in volunteering please call Kathy Hoinski @ 440-364-4161 or the church office. **All materials will be provided.**



### PAGEANT & PANCAKE THANK YOU

Thank you again for attending the YAC Pancake Breakfast and the Children's Christmas Pageant. Proceeds from your donations are helping to fund the youth mission trip this year. We look forward to seeing you at the next Pancake Breakfast on Easter morning.



## LMM MEN'S SHELTER ITEMS NEEDED

Starting in January and throughout February, we are collecting warm hats, gloves and socks for the LMM Men's Shelter, 2100 Lakeside.

With the recent extreme temperatures, warm and new or gently worn gloves, hats and socks are needed immediately.

There is a table and/or bins in the gathering space. Thank you in advance for your generosity!

As of January 19th, we've collected 45 pairs of socks, 6 gator( face covers), 5 pairs of gloves, 12 stocking hats, 3 fleece lined hoodie jackets, 2 puffer jackets and 4 down jackets. Such generosity and many thanks! Please keep the donations coming.



During these winter months, the shelter can be at full capacity. Please consider volunteering at the shelter when you can; however, please take a moment to contact them at (216) 566-0047 to find out if your services are needed at that time. If you do volunteer, we ask that you share your experience with Laurie or Marci in the office, so we can add it to our next Insight newsletter.

## JOURNEY CENTER APPRECIATION



During the Advent Social in December, many generous donations were made to the Journey Center for Safety and Healing. Total donations came to \$1,044.38. Your donations provide vital services to victims and survivors. Because of donors like you, 16,943 people experiencing abuse found strength and support last year as they determined their best path toward health and safety.

On behalf of the children, teens, adult and seniors served, thank you for your support!

## OUTLINE OF VOLUNTEER OPPORTUNITIES AT LMM HOUSING & SHELTER 2025

### TEACH

- Computer Lab Assistant: Assist residents with basic computer questions, job search and resume writing.
- Job Readiness: Assist one-on-one with those who are seeking jobs.
- Housing Locator: Work 1:1 with shelter residents on locating housing and speaking with landlords on behalf of the resident.

### KITCHEN

Cook and/or serve a meal, working with shelter kitchen staff.  
Breakfast 6:45-8:00, lunch 12:00-1:00, dinner 5:30-7:00,  
arriving 15 minutes early to get set up.

### SPIRITUAL

- Scripture Study: Reading and reflecting on Scripture with a volunteer group that welcomes all faith traditions.
- Listening: Be a listening/pastoral presence, training sessions on the Listening Program at 2100 offered.

### MAINTENANCE

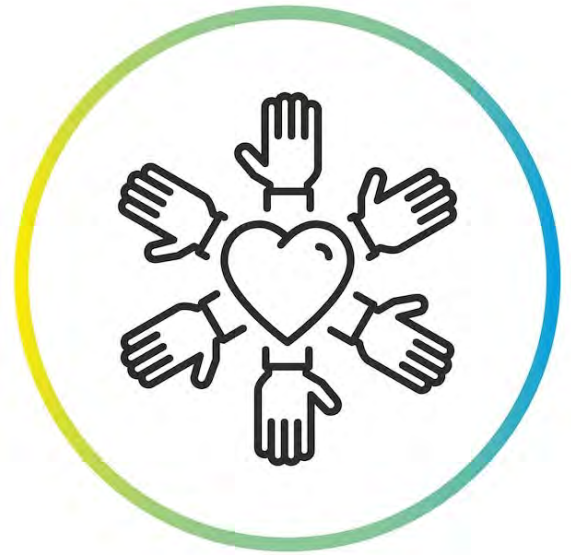
Help with indoor projects such as clothes sorting and painting. Outdoor projects such as neighborhood clean-up, periodic housing help- landscaping days, decorating.

### LEGAL CLINIC

Join with paralegals and lawyers, assisting residents with legal issues including child support, divorce, and expungements.

### VISUAL ARTS OR MUSIC WORKSHOPS

- Paint indoor & outdoor murals with shelter residents
- Lead simple art workshops
- Lead music therapy groups
- Take part in *Finding Voice Poetry* session, occurs Wednesdays 1:30-3:00. With shelter residents, read published poetry, discuss, then invited to write your own.



## OUTLINE OF VOLUNTEER OPPORTUNITIES AT LMM HOUSING & SHELTER 2025—continued

### RECOVERY WORKSHOPS

Lead recovery workshops, AA & NA or take part in existing workshops

### BOARD GAMES

Chess, Checkers, Jenga, Dominoes, Scrabble

### MISCELLANEOUS

Take part in yoga, facilitated by a teacher on Mondays & Wednesdays 10:00-11:00.

### SPECIAL EVENTS

- Take part in LMM's *Team Up to Clean Up* located at the shelter in the summer
- Take part in annual Christmas banquet on Dec 25<sup>th</sup>

**HAVE AN IDEA?** We love to work with volunteers who have specific interests & skills. Examples of workshops that grew out of volunteers' ideas: Bicycle Repair workshop; sewing sessions to sew the residents' clothes; current events discussion groups to world events.

For further information, please contact Lydia Bailey, Coordinator of Volunteers, Lutheran Metropolitan Ministry Men's Shelter, 2100 Lakeside Avenue, Cleveland, OH 44114. [Lbailey@Lutheranmetro.org](mailto:Lbailey@Lutheranmetro.org)  
Office: 216-649-7723. Lydia will check the weekly schedule to reserve a date & time for volunteering.

## AMERICAN RED CROSS BLOOD DRIVE



**Christ the Redeemer Lutheran Church**

Sponsor Group

**Sunday, January 26, 2025**

Date of Drive

**19**

Total Number of Donors

**0**

First Time Donors

**8**

Type O Donors

**16**

Units Collected

**One single blood donation can help save more than one life.  
Thank you for supporting our lifesaving mission!**



*"It's not how much we give, but how much love we put into giving" - Mother Teresa*

## SOUTH HILLS LEND-A-HAND

We continue to collect food for the food pantry in Broadview Heights that serves residents of Brecksville, Broadview Heights, Independence and Seven Hills.

**Call 440-526-0514 if you would like to help or need assistance.**

**Need on a more regular basis:**

**Tissues, Laundry Detergent and Canned Fruit**

### **ITEMS NEEDED THE MOST:**

canned meals/stew	canned soup
canned beans	canned fruit
canned vegetables	tuna fish
peanut butter & jelly	pancake mix
cereal	rice
macaroni & cheese	spaghetti sauce
Tissues	paper towels
hygiene products	diapers
	liquid laundry detergent

## USED CELL PHONES

Used cell phones are being collected throughout the year and will be donated to the **JOURNEY CENTER FOR SAFETY AND HEALING** (*formerly Domestic Violence Center*). There is a marked bag located on the coffee counter in the Gathering Space by the front entry doors.

The **JOURNEY CENTER FOR SAFETY AND HEALING** provides **services that foster safety and healing for those affected by child abuse and domestic violence.**

**Lutheran Disaster Response** actively works in **areas affected by tornados, hurricanes, flooding, wild-fires and war.** Donations can be made on our website home page or click on the donate tab. Checks can also be written to CRLC and write LDR on the memo line. CRLC will send your donation to LDR.

## REDEEMER CRISIS CENTER

**\*EMPHASIS ON ITEMS NEEDED\***

**Peanut Butter, Boxed Cereal and Toilet Paper,**  
lamps & lightbulbs  
matching bed linens (bagged & size indicated)  
16 qt. pots for rice  
only chicken noodle soup in cans  
tuna fish  
Peanut butter  
Personal hygiene items for men& women  
Toilet paper  
Hand held can openers

## OASIS COLLECTION

### OCTOBER FOCUS: NEW MINISTRY AT OASIS

Items can be dropped off at church into the NEW donation area of the coat closet.

Items needed include:

- deodorant- women's scents
- body wash
- lotion - regular or cocoa butter
- face wash - for sensitive skin
- tooth brushes & toothpaste
- Individual bags of pretzels or goldfish or cookies
- Nutri-grain bars
- fruit snacks
- coloring books
- color pencils

CRLC will continue to help OASIS financially as they continue to support and partner with multiple inner-city Lutheran church's efforts to help disadvantaged youth.

### Aluminum pull-tabs needed for RONALD MCDONALD HOUSE CHARITIES

There is a large jar in the Gathering Space by the stairwell as well as in the coat room at the bottom of the food shelf.

A local recycler turns the pull-tabs into **money for their Family Fund.**

### OHIO STAR THEATER PRESENTS THE ROAD TO DAMASCUS A MUSICAL JOURNEY THROUGH THE BOOK OF ACTS

We are looking for people interested in attending as a group from CRLC. Show times are 1pm and you can add the buffet and stay for dinner. \$49 for show/\$65.49 for show and buffet.

We are looking for a date to attend the musical as it runs from May through November. If interested, please sign up for the day options sheet on the board in the Narthex.

For questions, please contact Gail Berzins @ 440-503-6652.

### HOBBY DAYS



Hobby Days are two days/nights of creative fun with time for yourself, your favorite hobby, and fellow crafters. All proceeds go to our Youth Group (YAC) to put towards their summer youth mission trips.

February 21st & 22nd, 10:00am—12:00am

Weekend includes:

- Half of a round table
- Coffee, ice tea, water

### ADULT FELLOWSHIP CARD GROUP

**Saturday, February 15th at 6:00pm**

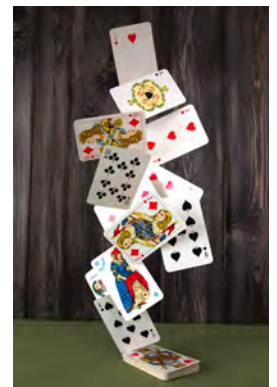
HOST: Carole Wooten

WHERE: 624 Ridgeview Dr., Seven Hills

Carole will provide the main course. Please bring, an appetizer, salad, side dish or dessert. RSVP to Carole at [applk6247@yahoo.com](mailto:applk6247@yahoo.com) or (216) 524-4288, if you can attend, or if you have questions.

We encourage you to join us even if you have never come before. We have lots of fun conversation and you don't have to play cards or games.

Contact Blaine Coleman if you are interested in hosting a future date.





## CRLC GAME NIGHT @CRLC



**Saturday, February 8, 2025**

4pm - 10pm

Games for all ages

Puzzle Table

Bring something to share (snack, appetizer or dessert).

Hot Dogs, chips, and water bottles provided.

Come for all or some of the time allotted.

## LADIES LUNCH BUNCH



**Wednesday February 12th at 11:30am, Simon's Deli – Brecksville**

Sign-up sheet in the Narthex, or feel free . Contact Kathleen Zaker with questions (440) 230-0911.

## February Volunteers In Parish Service

As always, if you are unable to serve on a scheduled date, *please find your own replacement* and let the church office know by Wednesday of that week.

*Thank you for your service*

<b>February 2</b>	<b>8:00 am</b>	<b>10:30 am</b>
Assisting Minister	Don Laubacher	Jill Koubal
Communion Assistants	x	Karl Koubal, Frank Boulton
Ushers	Don Laubacher , Al Radefeld	Wendy & Chris Dralle
Altar Care	Dorthea Kramer	Shirley Fisher
Counters: Cathy & Jeff Smith, Jeff Luksa		Coffee host: Jenni Halter
<b>February 9</b>	<b>8:00 am</b>	<b>10:30 am</b>
Assisting Minister	Steve Wilson	Lee Knicely
Communion Assistants	x	Maureen Michal, Dan Bartik
Ushers	Lou Carouse, Mike Berzins	Jennifer Eisenmann, Jeff Dentzer
Altar Care	Pam & Bob Bertsch	Linda Eckenbrecht
Counters: Jeff Dentzer, Mike Bodanza, Todd Romance		Coffee host: Linda Radefeld
<b>February 16</b>	<b>8:00 am</b>	<b>10:30 am</b>
Assisting Minister	Lou Carouse	Dana Vrcan
Communion Assistants	x	Kathy Hoinski, Wendy Dralle
Ushers	Mark Evans, Ken Blank	Blaine Coleman, Dana Vrcan
Altar Care	Dorthea Kramer	Linda Eckenbrecht
Counters: Andrew Perry, Lisa Witzke		Coffee host: Antonucci
<b>February 23</b>	<b>8:00 am</b>	<b>10:30 am</b>
Assisting Minister	Suzana Koch	Elaine Foss
Communion Assistants	x	Nancyanne Sinclair, Maureen Michal
Ushers	Don Laubacher, Lisa Antonucci	Scott Witzke, Amy Marek
Altar Care	Cheryl Stiefvater	Dana Vrcan
Counters: Joy Petrovic, Dan Bartik, Dennis Famey		Coffee host: Linda & Frank Shima

# Happy Birthday!

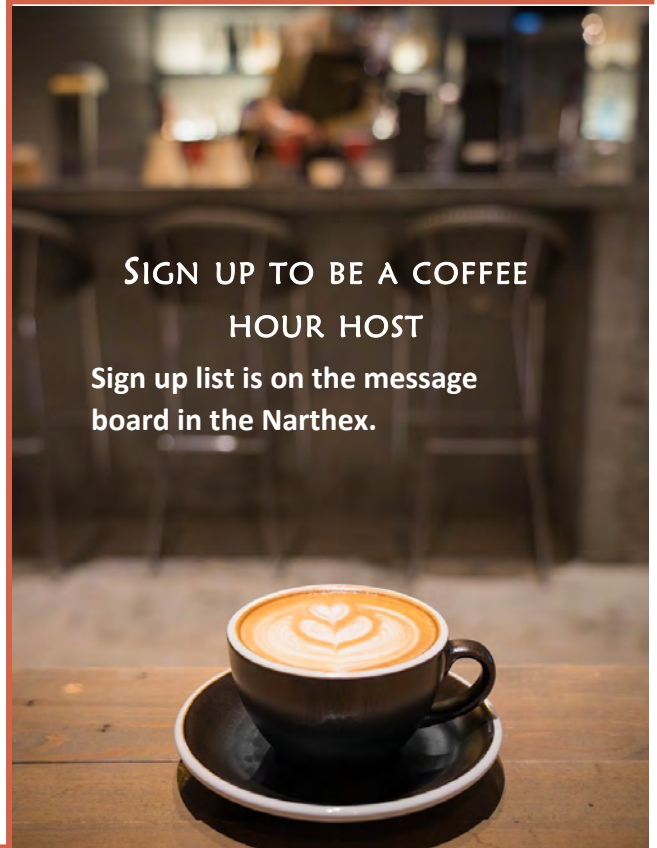
# Happy Anniversary!

- 1 George Stelmaschuk
- 1 Evan Garvas
- 2 Robert Stiefvater
- 2 Tori Benza
- 4 Steve Wells
- 6 Nicholas Travaglianti
- 7 Ryan Witzke
- 10 Jackie Lewison
- 10 Matt Beery
- 10 Molly Neubeck
- 10 Paige Neubeck
- 10 Nathan Singleton
- 11 Bob Springer\*\*
- 11 Kari Beery
- 11 Tess O'Donnell
- 12 Rachael Glissman
- 13 Charles Pohle
- 15 Madison Myers
- 17 Lauren Jirousek\*\*
- 17 Zachary Persuric
- 17 Kendrick Dobbins
- 18 Eric Kramer
- 19 Don Brusik
- 24 James Alfieri
- 26 Mardell Boulton
- 26 Ed McTernan Jr.
- 26 Michael Bandsuh

\*\*= Milestone Birthday



- 8 Kathy and Tom Hoinski
- 14 Denise and Michael Bandsuh
- 15 Karen and Michael Guzi
- 22 Kay and Jim Helle



## SIGN UP TO BE A COFFEE HOUR HOST

Sign up list is on the message  
board in the Narthex.



Did you know that we have the ability to receive online giving through our website?  
([www.crlcbrecksville.org](http://www.crlcbrecksville.org))

This option will allow for folks to contribute to our congregation using their credit card or debit card. There is not a cost for the church to host this ability, however this is a cost to us for every transaction that is processed. The donor however, can add this fee to any donation they make using this process so that the church receives the full amount intended. This will allow for folks who prefer to handle their giving in this way. This can be used for a one-time donation or it can be set up for recurring contributions. It also will allow specific giving to specific funds in our church. You also can download an app for your phone, and after a one-time set-up, you can easily use your mobile device for giving. Donors also have the ability to have recurring donations directly charged to their Bank or S&L checking or savings account through the church Simply Giving program without needing to use the on-line system. Please contact the church office to get more information or to set up this option."



- ◆ Did you know that Easter is toward the end of April this year (20<sup>th</sup>) – almost as late as it possibly can be (April 25<sup>th</sup>)?
- ◆ Did you know that some of our youth attended a Youth Quake weekend in Pittsburgh last month?
- ◆ Did you know that the youth raised over \$600 at their December pancake breakfast? Thank you!
- ◆ Did you know that a new altar for the outdoor chapel that was a part of the 50<sup>th</sup> anniversary celebration in-reach, is now being constructed?
- ◆ Did you know that CRLC was host to an ecumenical service last month celebrating the 1,700<sup>th</sup> anniversary of the Nicene Creed?
- ◆ Did you know that in order to publicize something in the newsletter we need it by the 15<sup>th</sup> of the month prior?

... and Now You Know!

## CHRIST THE REDEEMER LUTHERAN CHURCH PRAYS FOR. . .

### Our Vision and Ministry Boards

#### Our Vision and Ministry Boards

Hansler Family, Lew Jenkins, Gil Perram, Cameron Family, Lebzelter Family, Foss/Keils family, Elaine Foss, Karl Koubal, Wendy, Beth Marcinko, Ken Kasper, Marlene Kasper, Adalyn, Nancy, Don, Mildred Tackett, Brandy & Jeff, Randy, Marcy Bryan, Dan, Dale, Don, Matt Dolan, Suzanna James, Alan, Danny, Colleen Weiler, Dr. Scott James, Szcapanik Family.  
All those impacted by war and natural disasters.



Prayer concerns will be removed after 8 weeks, unless otherwise requested.

# FEBRUARY 2025

SUNDAY	MONDAY	TUESDAY	WEDNESDAY	THURSDAY	FRIDAY	SATURDAY
<p><b>CHRIST THE REDEEMER LUTHERAN CHURCH</b>            9201 Brecksville Road Brecksville, Ohio 44141            440.526.2303 <a href="http://www.office@crlcbrecksville.org">www.office@crlcbrecksville.org</a>            Monthly insight submissions: <a href="mailto:insight@crlcbrecksville.org">insight@crlcbrecksville.org</a></p>						
2 Groundhog Day 8:00am Worship 9:15am Adult Sunday School---Down & Out: Where Grace Takes You 9:15am Sunday School---All Ages 10:30am Worship	3 7:00pm Yoga	4	5 10:00am Ladies Bible Study 7:00pm Adult Choir	6 7:00pm Ladies Bible Study	7 4:00pm – 10:00pm Game Night at CRLC	8 15 Monthly Insight Deadline 6:00pm CRLC Cards at the Woofen's
9 8:00am Worship 9:15am Adult Sunday School---Down & Out: Where Grace Takes You 9:15am Sunday School---All Ages 10:30am Worship	10 7:00pm Yoga	11	12 11:30am Ladies Lunch Bunch at Simon's 7:00pm Adult Choir	13 Valentine's Day	14 10:00am – 12:00am Hobby Days	15 10:00am – 12:00am Hobby Days
16 8:00am Worship 9:15am Adult Sunday School---Who was Jesus? 9:15am Sunday School---All Ages 10:30am Worship	17 Presidents' Day 7:00pm Yoga	18	19 10:00am Faithful Readers 7:00pm Adult Choir	20 9:30am Theo Thursday	21 10:00am – 12:00am Hobby Days	22
23 8:00am Worship 9:15am Adult Sunday School---Who was Jesus? 9:15am Sunday School---All Ages 10:30am Worship	24 7:00pm Yoga	25	26 7:00pm Adult Choir	27	28	

*The monthly newsletter of:*

**CHRIST THE REDEEMER LUTHERAN CHURCH**

**9201 BRECKSVILLE ROAD BRECKSVILLE OH 44141**

(440) 526.2303 [www.crlcbrecksville.org](http://www.crlcbrecksville.org)

Postage  
.78  
Here



Address Service Requested

*Praising God. Serving Others.*

The Reverend Randy O'Donnell, Pastor



**2025**